

## C12D

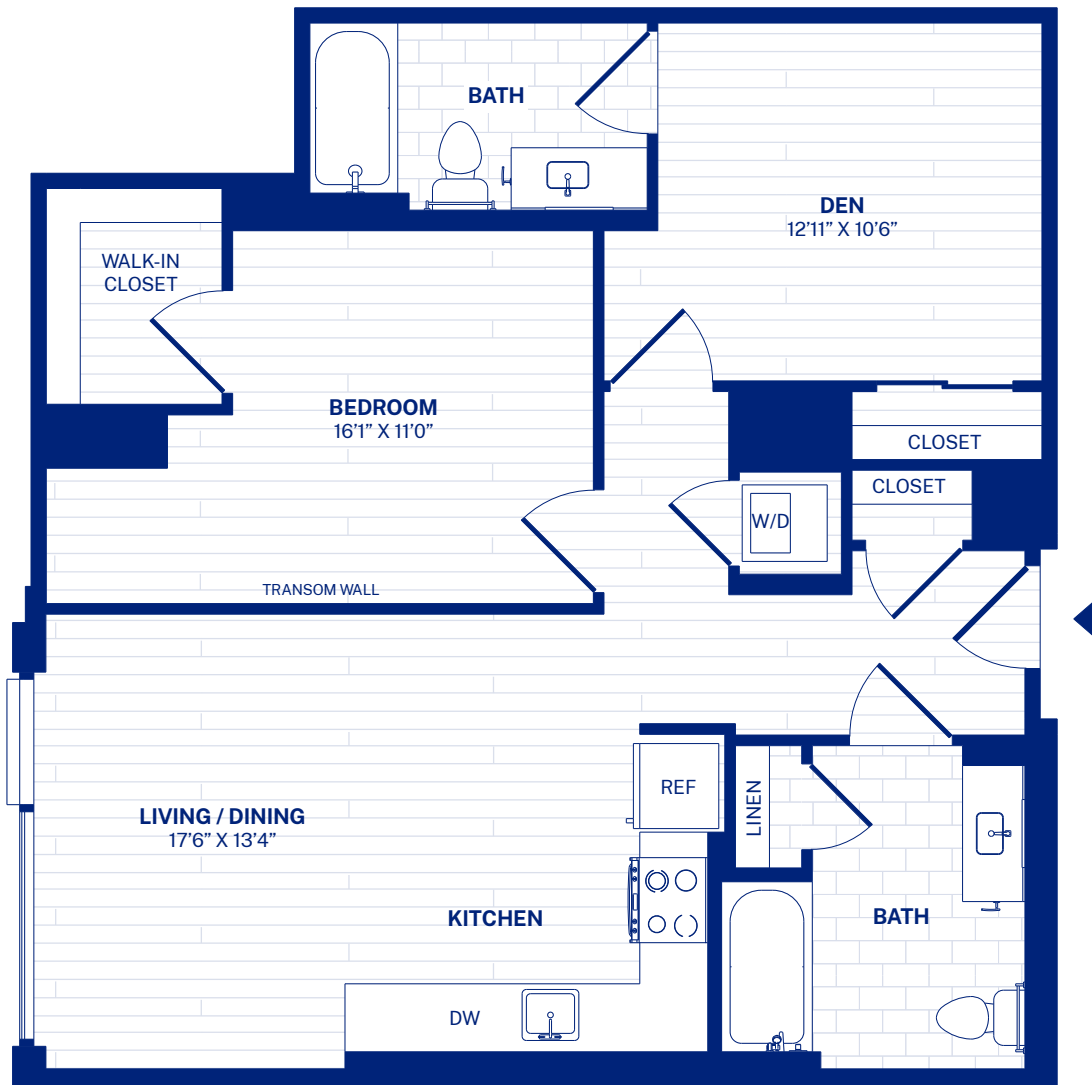
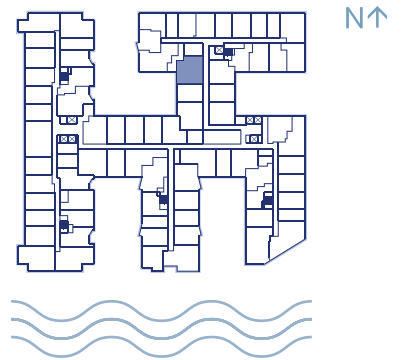
1 BEDROOM + DEN / 1 BATH  
903 SF

Date Available:

Floor:

Residence Number:

Rent:



Elevations and floor plans are artist's renderings and are shown for illustration purposes only. All square feet are approximate only.

Pursuant to the District of Columbia Inclusionary Zoning program, income restricted units are available at this development. Please contact the Department of Housing and Community Development at [www.dhcd.dc.gov](http://www.dhcd.dc.gov) regarding the availability of such units and requirements for registration in the Inclusionary Zoning program.